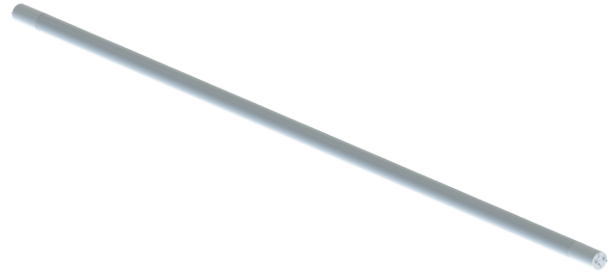


Lamps-T8

LED Tubes- Type B (By-pass only) Single and Double Ended

Project:	
Type:	
Catalog #:	



STANDARDS



HOUSING

- Polybutylene Housing with glass lens

ELECTRICAL

- Universal 120-277V AC voltage (50-60Hz) is standard.
- Input transient surge protection =1kV.
- Power factor>0.90.
- Total Harmonic distortion<20%.
- G13 Base
- Operating Temperature:-20°C- 45°C (-4°F- 113°F)

OPTICAL SYSTEM

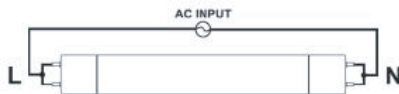
- Internal coated glass tube.
- Available color temperatures: 4000k (neutral white) and 5000k (cool white) .
- 2,200 nominal lumens.
- Long-life LEDs provide 131,000 hours of operation with at least 70% of initial lumen output (L70)*, and 39,000 hours with at least 90% of initial lumen output (L90)*.
- LED color maintenance < 0.003 chromaticity shift ($\Delta u'v'$) over the initial 6,000 hours of operation.
- Color rendering index > 80%.

WIRING DIAGRAM

Single Ended



Double Ended



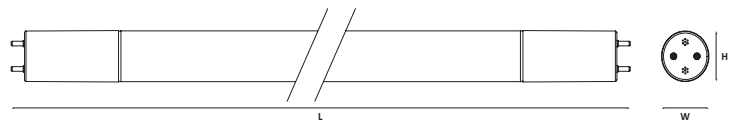
* L70 & L90 hours are IES TM-21-11 calculated hours.

CODE COMPLIANCE

- cULus listed for damp locations.
- DLC 5.1 standard listed.
- Complies with FCC part 15, class B.

WARRANTY

- 5 year warranty on all electronics and housing.



Model #	L (in)	W (in)	H (in)	Weight (lbs)
T8L-IDFH11-2200-4FT-CBA-7T	47.25	1.00	1.00	0.45
T8L-IDFH11-2200-4FT-EBA-7T	47.25	1.00	1.00	0.45

ORDERING INFORMATION

Example: T8L-IDFH11-2200-4FT-CBA-7T

Series	Nominal Lumen Output		Kelvin Temperature	
	T8L-IDFH11	2200-4FT	2200 Lumens	CBA EBA